



## Flow-Rail pallet storage system

Flow-Rail is a high-density pallet storage system that can be installed on new or existing selective racks. It is a non-motorized, 'last-in / first-out' system from 3 up to 10 pallets deep with **rails that are not inclined.** Flow-Rail can be operated using conventional forklift trucks.



## Flow-Rail benefits

- 1 - horizontal tracks only 3.5"H (maximize vertical space)
- 2 - lanes up to 10 pallets deep (most push-backs 6 max)
- 3 - system does not derail or block (everything moves together)
- 4 - no contact or pressure in-between pallets (0 product damage)
- 5 - track length easy to modify (100% of material re-used)
- 6 - low maintenance / no parts to replace (very few components)
- 7 - no special beams required (simply add Flow-Rail on existing racks)
- 8 - ok to double-stack pallets (can manage 3000#+ loads)

When retrofitted in drive-in, lift-operators can load/unload pallets without having to circulate inside the rack structure.

- 1 – load/unload 75% quicker (increased efficiency)
- 2 – each storage level can hold a different product SKU (greater flexibility)
- 3 – storage capacity increased up to 25% (no more half-empty tunnels)
- 4 – eliminates 95% of rack damage & repairs (save time & money)
- 5 – safer environment for lift-operators (avoid risk of costly accidents)
- 6 – reduces lift-truck wear & tear (save time & money)

Installs in California, Washington, Minnesota, Colorado, Texas, New Jersey, North Carolina, Vermont, Oregon, Wisconsin, Florida, Michigan, Arizona, Illinois, Georgia, New York, Tennessee, Arkansas, Mississippi, Indiana, Pennsylvania, Ohio, Puerto Rico, Virginia.



**Maximize space: 3 and 4 deep lanes back-to-back reduce # of circulation aisles**





**Drive-in retrofit: each storage lane can hold a different SKU**



**Double-stacked below, Flow-Rail above**





**Tracks only 3.5" high optimizes vertical space**



**Compatible with cooler / freezer environments**



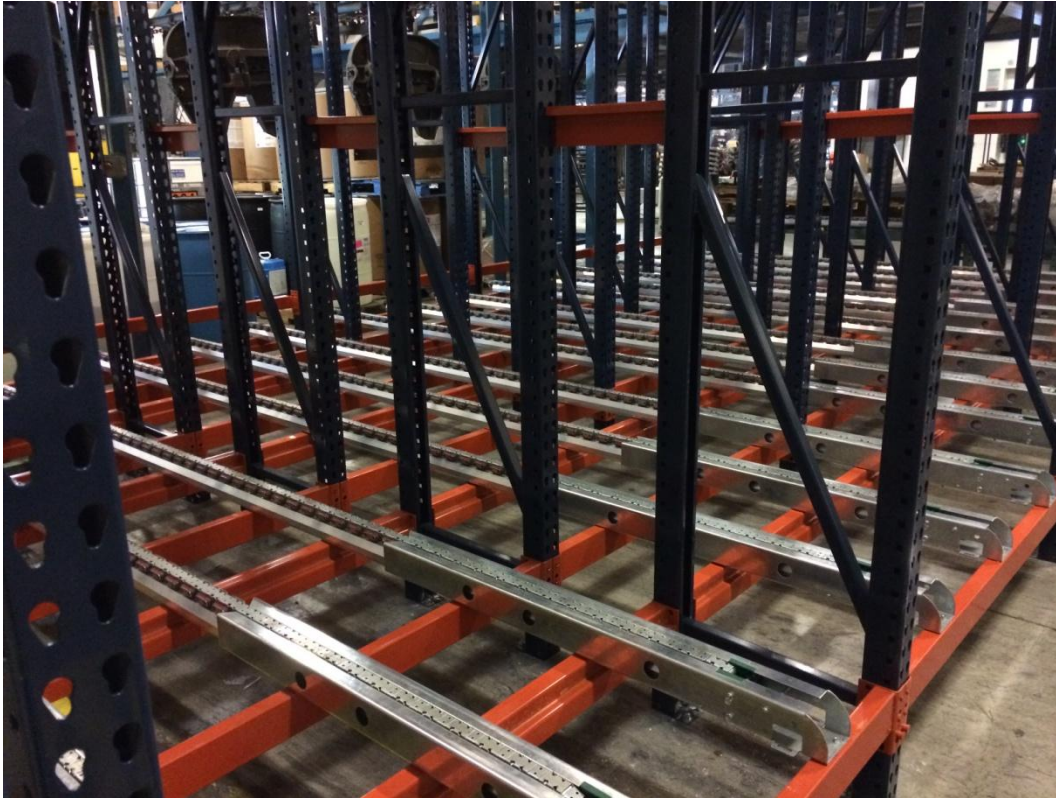


**Storage lanes up to 10 pallets deep**



**Ideal for low ceiling environments**





**3 tracks per storage lane for very heavy pallets**

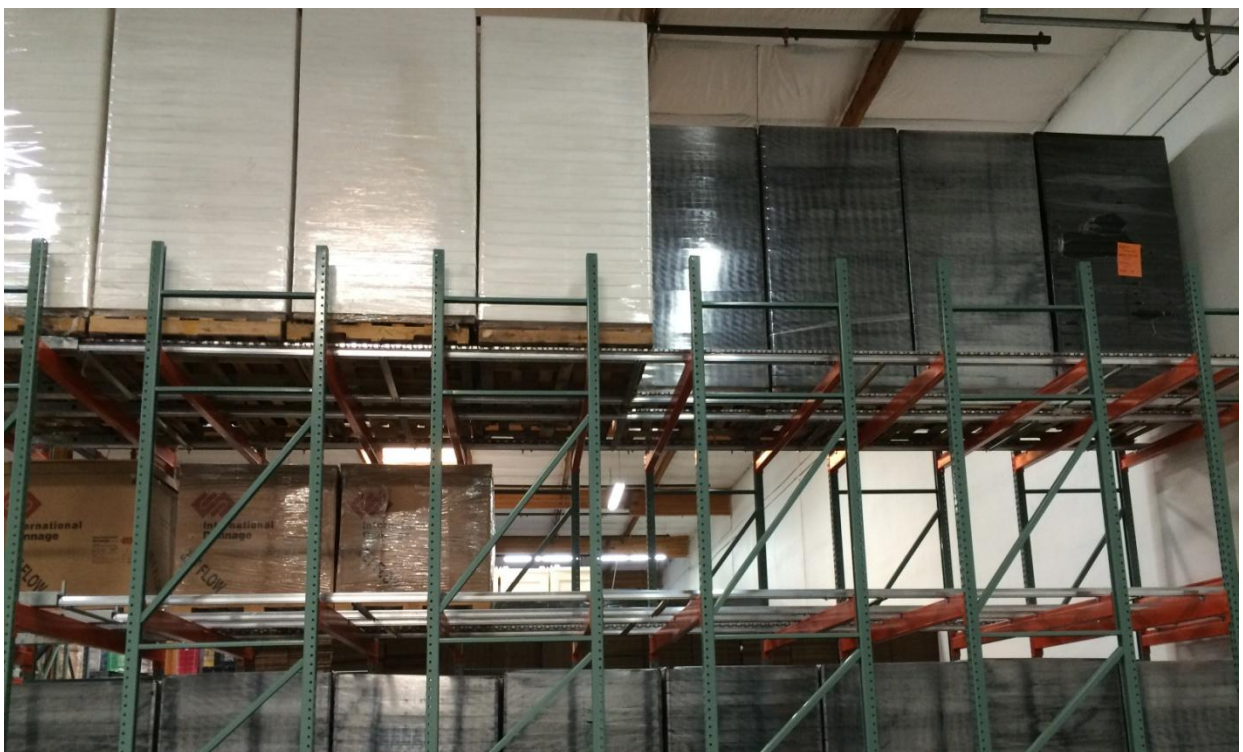


**Multiple track system for oversized material**





**Retractable flag indicates when storage lane is full**



**Horizontal tracks with no pitch = 0 pressure in-between pallets**

*Ideal for sensitive material such as produce, super sacks, etc.*





**Double-stack pallets**

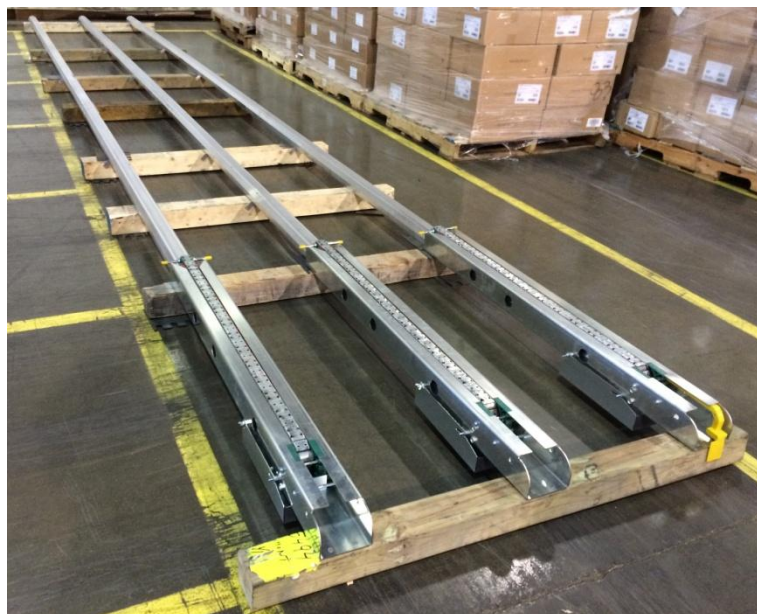


**Can be installed on any type of racking**





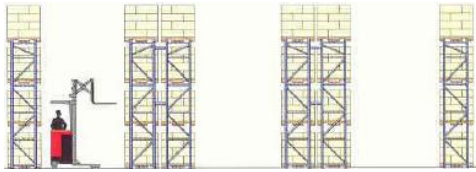
**6 deep Flow-Rail above, picking aisles below**



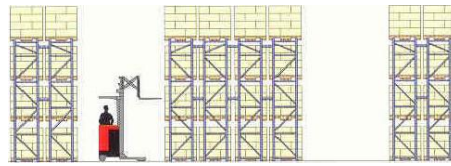
**Test lane prior to project purchase – 30 day money-back guarantee**



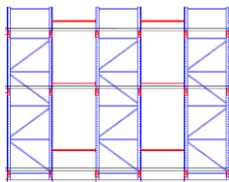
**Typical selective rack layout**



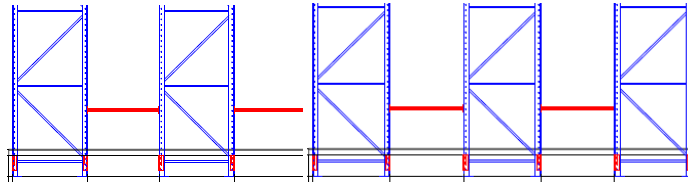
**Typical double-deep rack layout**



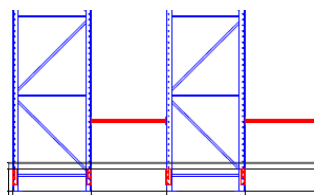
**Flow-Rail transforms circulation aisles into hundreds of new pallet storage locations**



*5 pallets deep*

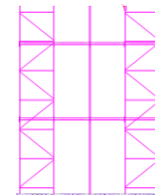


*9 pallets deep*



*7 pallets deep*

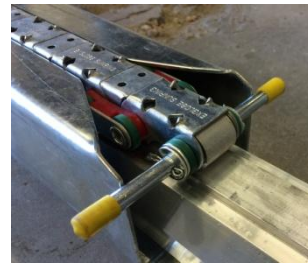
Existing  
uprights &  
beams can be  
used to create  
3 to 10 pallet  
deep lanes



*4 pallets deep*









25 Features	Flow-Rail		Drive-In		Push-Back	
Picking / replenish speed	Fast	3	Slow	1	Fast	3
Automatic replenishment in front	Yes	3	No	1	Yes	3
Deep lane storage capability	10	2	10+	3	6	1
Optimizes vertical storage space	Good	3	Good	3	Average	2
Restricted by pallet length	None	3	None	1	Medium	2
Restricted by pallet width	None	3	Medium	2	Yes	1
Restricted by length + width combined	None	3	Yes	1	Yes	1
Restricted by pallet weight	Low	3	Medium	2	Medium	2
Product damage potential	Low	3	Medium	2	Medium	2
Horizontal storage of pallets	Yes	3	Yes	3	No	1
Pallet jams within the system	Low	3	Low	1	Medium	2
System derails	Low	3	Low	1	Medium	2
Run-away pallets fears	None	3	None	3	Medium	2
Food-grade standard components	Standard	3	Optional	2	Optional	2
Rust-proof	Standard	3	Optional	2	Optional	2
Cooler / freezer compatibility	Standard	3	Optional	2	Optional	2
Used rack compatibility	High	3	Medium	2	Low	1
Retrofits onto existing racks	Yes	3	No	1	No	1
Damaged rack part replacement	Easy	3	Easy	3	Hard	1
Relocation of storage levels	Easy	3	Medium	2	Hard	1
Lift circulates inside rack structure	No	3	Yes	1	No	3
Fork-lift rack abuse probability	Low	3	High	1	Low	3
Reach truck compatibility	Yes	3	No	1	Yes	3
Accident frequency	Low	3	High	1	Medium	2
Resale value \$\$	High	3	Medium	2	Medium	2
<b>Scorecard</b>	<b>Flow-Rail</b>	<b>74</b>	<b>Drive-In</b>	<b>44</b>	<b>Push-Back</b>	<b>47</b>

## George Bally

Exglobe / Sunring – manufacturer of Flow-Rail

1.855.884.0296

[gbally@exglobe.ca](mailto:gbally@exglobe.ca)

[www.exglobe.ca](http://www.exglobe.ca)



Instagram

flowrail\_pallet\_storage