

# ENGINEERING SERVICES

A man with a beard and glasses, wearing a white hard hat and a high-visibility orange and yellow safety vest over a black shirt, is holding a black tablet. He is standing in a warehouse or industrial setting with metal shelving units in the background. The image is slightly blurred, focusing on the worker.

**DAMOTECH**

# North America's Leading Rack Safety Partner

|   |    |
|---|----|
| About Damotech                              | 04 |
| Pallet Rack Safety Regulations              | 05 |
| The Experts                                 | 06 |
| Rack Safety Inspection                      | 07 |
| Load Capacity Calculations                  | 08 |
| When to Inspect Your Pallet Racking         | 09 |
| Damotech Platform Benefits                  | 13 |
| Rack Safety Training                        | 14 |
| Why Choose Damotech's Engineering Services? | 16 |
| Content Offers                              | 17 |
| Rack Safety Experts                         | 18 |

**DAMOTECH'S LEED CERTIFIED HEADQUARTERS  
AND MANUFACTURING FACILITY**



# About Damotech

---

As the largest and most trusted rack safety and repair company in North America, Damotech is your one-stop-shop for everything rack safety. Trusted by over 225 Fortune 500 companies, we have over 30 years of experience in making warehouses safer. Whether you are in California, Vermont, Puerto Rico or Ontario, our vast network of experts is ready to service you locally. We have distributors throughout all major cities in both Canada and the United States that are ready to provide you with a high-quality, personalized service.



## ENGINEERING SERVICES

Damotech's in-house engineers are among the most knowledgeable in the industry. They offer expert engineering services focused exclusively on industrial racking systems and their safety. Learn more about our [rack conformity inspections and load capacity calculation](#) services.



## RACK PROTECTION & REPAIR

Damotech offers industry-leading [rack repair kits](#) and [damage prevention products](#) for your pallet racking systems. We strive to put an end to the endless cycle of upright replacement. Our units are customizable and built to measure, to meet your specific needs.



## WEB PLATFORM

Damotech is the only company in the industry to offer a software platform that manages your rack assets and inspections. Accessible through the Cloud, the [Damotech Platform](#) makes it easier than ever to track your progress toward a safer warehouse.



# Pallet Rack Safety Regulations

---

In North America, there are well-defined standards for the safe use of pallet racks in all warehouses. However, sorting through all the different rack safety standards and regulations can be challenging.

In the United States, there are regulations from organizations like RMI (Rack Manufacturer's Institute), ANSI (American National Standards Institute) and OSHA (Occupational Safety and Health Administration). Also, there are those established by Canadian government

bodies like CSA (Canadian Standards Association), WorkSafeBC and Ministry of Labour, Training and Skills Development.

At Damotech, we have all the required expertise to help you make the entire regulatory conformity certification process as straightforward as possible. So whether you are looking to get a 3rd party rack safety audit, a PSR review, or an engineer-stamped drawing with load capacities to comply with applicable codes, Damotech has you covered.



# The Experts

---

Damotech's engineers are among the most knowledgeable in the racking industry. From conformity inspections, to load capacity calculations, and safety training, we tailor our services to your unique needs and requirements while holding to the highest industry standards.



# When to Inspect Your Pallet Racking?

---

Regardless of the industry, the type of pallet racks you own, or the kind of issues that are prevalent in your warehouse, **rack inspections should occur on a regular basis**, and especially in the following situations:

## NEW RACK INSTALLATION

Whether it's your entire warehouse or a small section, a brand-new installation calls for a 3rd party to verify that everything was installed according to engineering specifications and that the rack systems are ready to be put to safe use.

## REGULATORY COMPLIANCE REVIEW

Some jurisdictions require an official document stating that racks have been rated, inspected and are safe to use. Ontario requires a **PSR (Pre-start Health and Safety Review)** signed by an engineer and British Columbia (WorkSafeBC) also requires inspections.

## CORPORATE SAFETY INITIATIVE

When launching a corporate-wide safety program, you want a baseline inspection performed to assess the condition of the racks at a specific point in time, and to be able to measure your progress towards a safer warehouse environment.

## REPAIR OR REPLACEMENT

If your damaged rack was fixed with parts from the original equipment manufacturer (OEM) or a specialized **rack repair kit**, you may want to ensure that the rack still meets original specifications and maintains its rated load capacity.

## TIMELY RE-ASSESSMENT

An annual, quarterly, or monthly re-inspection of your racks should occur after a baseline inspection has already been conducted. New damage may have occurred. Updating the status of previously reported issues will give a more accurate measure of performance.

## RECONFIGURATION REVIEW

You changed the layout of your racking systems or changed the height of certain beams? An inspection or certification (LARCS) is required by code before putting the rack systems back into usage.



# Rack Safety Inspection

Our engineers walk through your facility and meticulously inspect your racking systems for conformity to established codes and standards by collecting on-site information, taking photos and recording any deficiencies, damages or missing components. Our pallet rack inspection services are non-disruptive to your daily operations. Following this visit, we'll issue a detailed report with recommendations.

| Location    | Issue ID | Issue Description | Priority | Status | Photo |
|-------------|----------|-------------------|----------|--------|-------|
| Warehouse A | 001      | Missing bolt      | High     | Open   |       |
| Warehouse A | 002      | Cracked beam      | Medium   | Open   |       |
| Warehouse A | 003      | Loose nut         | Low      | Open   |       |
| Warehouse A | 004      | Corrosion         | Medium   | Open   |       |
| Warehouse A | 005      | Missing plate     | High     | Open   |       |
| Warehouse A | 006      | Bent beam         | High     | Open   |       |
| Warehouse A | 007      | Cracked beam      | Medium   | Open   |       |
| Warehouse A | 008      | Missing bolt      | Low      | Open   |       |
| Warehouse A | 009      | Loose nut         | Low      | Open   |       |
| Warehouse A | 010      | Cracked beam      | Medium   | Open   |       |

## INCLUDES:

- ✓ Outlined inspection procedures
- ✓ List of issues with photos and required action
- ✓ Visual representation of floorplan with positions of issues
- ✓ Report access through the Damotech Platform

Anomalies are rated according to priority from high, moderate, to low. Issue lists are provided in PDF and Excel formats. The latter contains clickable links to full-size inspection photos. All Damotech engineering services include a visual report of the pallet rack layout within the warehouse facility. The plan view makes it easy to visualize the status of your racking's health and provides a bird's eye view on both strengths and opportunities.





# Load Capacity Calculations

Knowing and displaying your pallet rack load capacity, as well as having load application and rack configuration (LARC) drawings on hand are both critical to the safe operation of your warehouse. All load capacity calculation mandates are in conformance with North American rack design specifications.



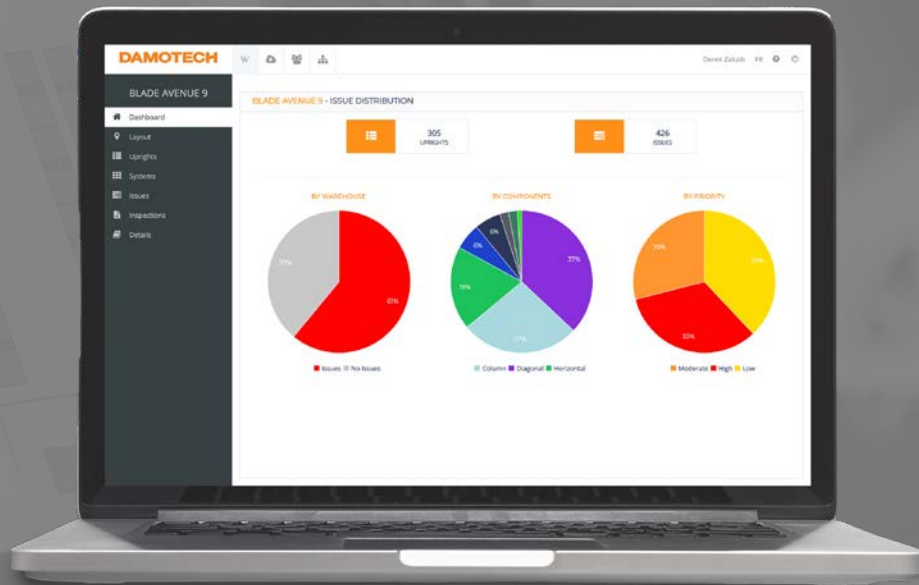
## REPORT INCLUDES:

- ✓ Warehouse layout
- ✓ Visual on racking/pallet design
- ✓ Appendix report detailing column styles, beam configurations, beam levels, and max pallet weight output
- ✓ Load capacity labels

All load capacity calculation mandates include plastic adhesive labels stating the load capacity of each bay. When pallet beam configuration and load capacity is uniform, end of aisle plaques can be produced for a nominal fee.

# The Damotech Platform

The Damotech Platform is **the only rack inspection tracking software of its kind**. With access to the latest rack inspection data, warehouse operators can better manage their racking assets. Accessible through the cloud, the platform makes it easier than ever to track your progress toward a safer warehouse.



# Damotech Platform Benefits



## MANAGE MULTIPLE LOCATIONS

It's never been easier to manage and stay up to date with multi-warehouse environments. Simply login and all the data is at your fingertips.



## UNIQUE SOLUTION

The Damotech Platform is the only rack inspection software that enables you to manage your rack assets and track your progress toward a safer warehouse.



## GRAPHIC VIEWER

From warehouse layouts to dashboards and photos of deficiencies, everything is graphically presented for easy viewing.



## EASY TO USE

Although quite powerful, the Damotech Platform was designed to be intuitive and easy to learn.



## IN THE CLOUD

The software and all of your data are hosted in a secured cloud environment. This means you always have the latest version of everything that you can access from anywhere, at any time.



## TRACK YOUR PROGRESS

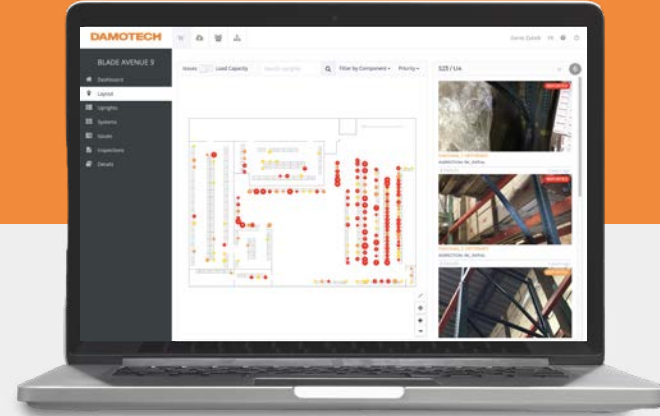
Stop using paper and Excel to track your deficiencies and repairs. Access and store data from your latest inspection to easily view which deficiencies need attention.

# Rack Safety Dashboard & Issue Viewer



## REAL-TIME DASHBOARD:

- Visual overview of the current state of racking
- Easily monitor issues by warehouse location
- Identify issue type, rack component or priority level
- Implement own inspection protocol via platform



## RACK ISSUES:

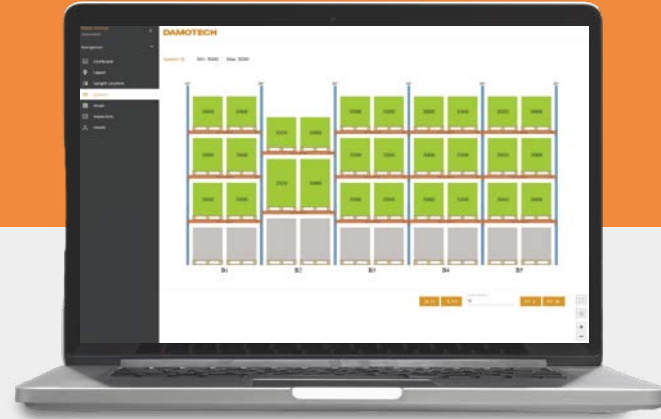
- Secure and centralized inspection data
- Number of rack issues and color by severity level
- Review damages via documented pictures
- Easily communicate insights via shareable links
- Analyze data via filter options, sorting and ranking

# Load Capacity Viewer



## WAREHOUSE PLAN VIEWER:

- Clear visualization of warehouse plan view
- Capture varying load capacities with color-coding
- Proactively identify rack over-loading risks
- User-friendly interaction with other views



## LOAD CAPACITY ANALYSIS:

- Review load capacity by pallet position
- Proactively identify load capacity anomalies
- Capture understanding of load variations
- Identify key findings via racking specs



# Rack Safety Training

---

Our pallet rack safety training can significantly lower the number of incidents in your warehouse by educating your workers on the proper course of action when rack safety issues arise. Training your workforce on rack safety is one of the best investments your company can make to minimize unnecessary risk as well as help promote a culture of workplace safety.



# On-site or Online Classes



## ON-SITE, AT YOUR WAREHOUSE

Our engineer(s) will travel to your facility and train your employees on warehouse rack safety and methods for conducting regular rack inspections. This pallet rack safety course is split into two parts: instructor-led classroom session and a practical workshop in your warehouse. Do you have specific requirements or time considerations? Training sessions are tailored to your needs.



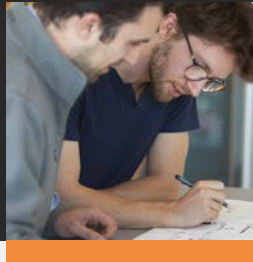
## ONLINE WEBINAR TRAINING

As an alternative to our on-site training, we've created an online version of our rack safety course. You choose the time and our instructors will teach your workers about rack safety awareness and conducting inspections by videoconference on the Zoom platform. This option is convenient and flexible and can also be tailored to your specific needs.

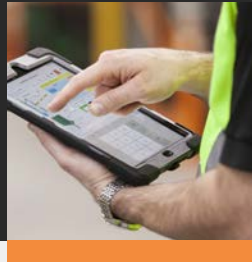
# Why Choose Damotech's Engineering Services?



**Unrivaled Rack  
Engineering Expertise**



**Specialized In-House  
Engineers**



**Standardized Method  
of Data Intake**



**Seismic Zone  
Experience**



**North American  
Footprint**



**Most Trusted by  
Over 225 Fortune 500  
Companies**

No matter your challenges, our dedicated team of engineers are ready to serve you.

## Content Offers

## BACK INSPECTION CHECKLIST

DATE \_\_\_\_\_

INSPECTOR LOCATION \_\_\_\_\_

## DAMOTEC

SHEET # \_\_\_\_\_

FREQUENCY \_\_\_\_\_

| #  | LOCATION | WINDY COLLARS | BENTS | TUBES | POORING | CLOSURES | SIL. PENETS | AIR VALVES | TOP OF LAME | PENETRY | OBSERVATIONS |
|----|----------|---------------|-------|-------|---------|----------|-------------|------------|-------------|---------|--------------|
| 1  |          |               |       |       |         |          |             |            |             |         |              |
| 2  |          |               |       |       |         |          |             |            |             |         |              |
| 3  |          |               |       |       |         |          |             |            |             |         |              |
| 4  |          |               |       |       |         |          |             |            |             |         |              |
| 5  |          |               |       |       |         |          |             |            |             |         |              |
| 6  |          |               |       |       |         |          |             |            |             |         |              |
| 7  |          |               |       |       |         |          |             |            |             |         |              |
| 8  |          |               |       |       |         |          |             |            |             |         |              |
| 9  |          |               |       |       |         |          |             |            |             |         |              |
| 10 |          |               |       |       |         |          |             |            |             |         |              |
| 11 |          |               |       |       |         |          |             |            |             |         |              |
| 12 |          |               |       |       |         |          |             |            |             |         |              |
| 13 |          |               |       |       |         |          |             |            |             |         |              |
| 14 |          |               |       |       |         |          |             |            |             |         |              |
| 15 |          |               |       |       |         |          |             |            |             |         |              |
| 16 |          |               |       |       |         |          |             |            |             |         |              |
| 17 |          |               |       |       |         |          |             |            |             |         |              |
| 18 |          |               |       |       |         |          |             |            |             |         |              |
| 19 |          |               |       |       |         |          |             |            |             |         |              |
| 20 |          |               |       |       |         |          |             |            |             |         |              |
| 21 |          |               |       |       |         |          |             |            |             |         |              |
| 22 |          |               |       |       |         |          |             |            |             |         |              |
| 23 |          |               |       |       |         |          |             |            |             |         |              |
| 24 |          |               |       |       |         |          |             |            |             |         |              |
| 25 |          |               |       |       |         |          |             |            |             |         |              |
| 26 |          |               |       |       |         |          |             |            |             |         |              |
| 27 |          |               |       |       |         |          |             |            |             |         |              |
| 28 |          |               |       |       |         |          |             |            |             |         |              |
| 29 |          |               |       |       |         |          |             |            |             |         |              |
| 30 |          |               |       |       |         |          |             |            |             |         |              |
| 31 |          |               |       |       |         |          |             |            |             |         |              |
| 32 |          |               |       |       |         |          |             |            |             |         |              |
| 33 |          |               |       |       |         |          |             |            |             |         |              |
| 34 |          |               |       |       |         |          |             |            |             |         |              |
| 35 |          |               |       |       |         |          |             |            |             |         |              |
| 36 |          |               |       |       |         |          |             |            |             |         |              |
| 37 |          |               |       |       |         |          |             |            |             |         |              |
| 38 |          |               |       |       |         |          |             |            |             |         |              |
| 39 |          |               |       |       |         |          |             |            |             |         |              |
| 40 |          |               |       |       |         |          |             |            |             |         |              |
| 41 |          |               |       |       |         |          |             |            |             |         |              |
| 42 |          |               |       |       |         |          |             |            |             |         |              |
| 43 |          |               |       |       |         |          |             |            |             |         |              |
| 44 |          |               |       |       |         |          |             |            |             |         |              |
| 45 |          |               |       |       |         |          |             |            |             |         |              |
| 46 |          |               |       |       |         |          |             |            |             |         |              |
| 47 |          |               |       |       |         |          |             |            |             |         |              |
| 48 |          |               |       |       |         |          |             |            |             |         |              |
| 49 |          |               |       |       |         |          |             |            |             |         |              |
| 50 |          |               |       |       |         |          |             |            |             |         |              |

To schedule a complete inspection, contact us at [www.damotec.com](mailto:www.damotec.com)

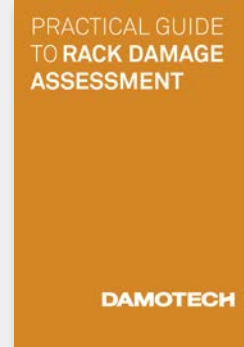
## RACK INSPECTION CHECKLIST

Conduct your own surveys with this free inspection checklist.



## RACK SAFETY POSTER

Hang this free poster in your warehouse to educate workers on pallet rack safety.



## RACK DAMAGE ASSESSMENT GUIDE

Review our simplified guidelines to help determine what damage needs to be addressed.



## QUIZ: HOW SAFE IS YOUR WAREHOUSE?

Wondering where your warehouse stands in terms of rack safety? Take this short quiz to find out!

# Rack Safety Experts

---

Whether you manage  
a single warehouse  
or operate multiple  
distribution centers,  
our goal is to make your  
job easier and safer.

+1 (877) 990-3266

[damotech.com](https://damotech.com)

